

KNOWS WHAT TO EXPECT DURING PREGNANCY

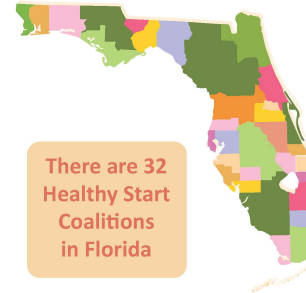
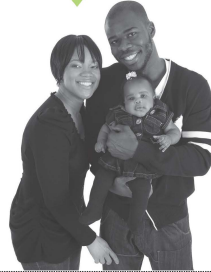
HAS RESOURCES FOR 2-YEAR-OLD DAUGHTER AND BABY-TO-BE

QUIT SMOKING DURING PREGNANCY

BEGAN PRENATAL CARE IN FIRST TRIMESTER

PRACTICES BETTER PARENTING

BREASTFEEDS BABY



FUNDING FY 2017-18

Department of Health
\$26,767,565

Agency for Health Care Administration
\$41,172,757

FAHSC LEADERSHIP

Cathy Timuta, *Executive Director*
Faye Johnson, *President*
Monica King, *Vice-President*
Fred Leonard, *Treasurer*
Andrea Berry, *Assistant Treasurer*
Shon Ewens, *Secretary*
Samantha Suffich, *At-large Member*
Jane Murphy, *Past President*

CONTACT US

FL Assoc. of Healthy Start Coalitions
2002 Old St. Augustine Road, E.45
Tallahassee, FL 32301
Phone: 850-999-6200

www.healthystartflorida.com



WOMEN & INFANTS SERVED BY HEALTHY START



Healthy Start Coalitions Screened **73%** of Pregnant Women in Florida for Health Risks



Families with Pregnant Women that Received a Healthy Start Service



Healthy Start Coalitions Screened **95%** of Infants in Florida for Health Risks



Families with Infants that Received a Healthy Start Service

MomCare
Number of clients

82,613

MomCare offers outreach services to women enrolled in Medicaid to explain Medicaid options, facilitate care with healthcare providers, provide referrals to WIC and Healthy Start, and connect clients to community resources.

Infant mortality rates in Florida have decreased more than this amount since the program's inception.

35%



I don't know what would happen if I had no one to help – I would have felt alone; it was all very hard. Having the help made it all less stressful. [My Healthy Start worker] makes me want to go further in life and I'm even more determined than before.



I don't know what I would have done without [Healthy Start]. After suffering three miscarriages, Katherine credits Healthy Start for helping make her first full term pregnancy a memorable and wonderful experience.

County Birth Data Comparison 2015-17 (Source: Florida Charts, run 12-14-18)

Indicators - State	State Count	State Rate
Births		
Total Births	672,870	11.1
Prenatal Care		
Births with Adequate Prenatal Care (Kotelchuck index)	420,332	70.5
Births With 1st Trimester Prenatal Care	472,569	78.3
Births With 3rd Trimester or No Prenatal Care	37,037	6.1
Maternal and Family Characteristics		
Births to Mothers 15-19	33,851	19.7
Repeat births to mothers ages 15-19	5,299	15.7
Birth with Inter-Pregnancy Interval < 18 months	131,072	34.7
Births to mothers >18 without high school education	71,414	10.9
Percentage Served by WIC	1,433,284	72.1
Live Births to Mothers who Smoked during Pregnancy	35,058	5.2
Mothers who Initiate Breastfeeding	576,764	85.7
Low Birth Weight		
Total Live Births Under 2500 Grams	58,727	8.7
Preterm Births and Elective Deliveries		
Total Preterm Births (<37 weeks gestation)	68,044	10.1
Births 37-38 Weeks Gestation with an Elective Delivery	43,563	33.1
Maternal and Fetal Deaths		
Maternal Deaths	123	18.3
Total Fetal Deaths	4,642	6.9
Infant Deaths		
Total Infant Deaths	4,135	6.1
Leading Causes of Infant Death		
Total Congenital & Chromosomal Anomaly Infant deaths	796	1.2
Total Disorders Related to Short Gestation and Low Birth Weight Infant Deaths	661	1
Total Newborn Affected by Maternal Complications of Pregnancy Infant Deaths	314	0.5
Total Unintentional Injury Infant Deaths	340	0.5
Total Sudden Infant Death Syndrome (SIDS)	185	0.3
Total Newborn Affected by Complications of Placenta, Cord, and Membranes Infant Deaths	172	0.3
Other Selected Causes of Infant Mortality		
Total Sudden Unexpected Infant Death (SUID)	649	1

FLORIDA ASSOCIATION OF HEALTHY START COALITIONS

is dedicated to strengthening maternal and child health by ensuring all Florida families have access to a continuum of affordable and quality care and services. We do this through our primary program, Healthy Start, but also through our programs MIECHV and MomCare, and public awareness campaigns. Many of our coalitions participate in the National Fetal and Infant Mortality Review, which consists of county wide efforts to better understand the issues associated with fetal and infant mortality and morbidity, and to develop strategies that improve perinatal systems of care, locally and statewide. Unfortunately, the costs of a poor birth outcome are great, not only on a personal level but also on a financial and societal level. By investing in Healthy Start we invest in our communities and Florida's future.